



TEC[®]
CONTAINER



CONTAINER AND RO - RO LASHING EQUIPMENT



Headquarters



TEC CONTAINER

C/Tajo, 19. Pol.Ind. "Las Acacias"
28840 - Mejorada del Campo
Madrid - **SPAIN**
Phone: +34 913 021 638
teccontainer@teccontainer.com
www.teccontainer.com

Europe



TEC CONTAINER, SRL

Via Fieschi, 1/7
16121 Genova - **ITALY**
Tel. +39 010 542 523
Fax +39 010 553 11 42
teccontainer@teccontainer.it



N.V. LASH TECH

Oosterweelsteenweg 58
B-2030 Antwerp - **BELGIUM**
Tel. +32 3 541 16 28
Fax +32 3 541 52 78
info@lash-tech.com



TECNICAS DE CONTENTORIZAÇÃO, LTD

Das Rabelas - Lote n° 20 Armazem 2H
2830222 Barreiro - **PORTUGAL**
Tel. +351 21 214 84 90
Fax +351 21 214 84 99
lino.costa@tec-portugal.pt
pinto.ramos@tec-portugal.pt



SANGER METAL Co. Ltd.

Mostnika str.10-12
PL.70-672 Szczecin - **POLAND**
Tel: +48 91 4623025
Mob: +48 602 338030
biuro@sangermetal.com



MARINE CONSULTANTS

52 rue Vergniaud
75013 Paris - **FRANCE**
Tel. +33 (0) 1 45 89 87 97
Fax +33 (0) 1 45 65 36 26
marine.consultants.paris@wanadoo.fr



CERTEX SVENSKA AB

Visiting adr Lundby Hamngata 26,
417 55 Gothenburg Box 8713
S-40275 - Gothenburg - **SWEDEN**
Tel. +46 31 50 86 50
Fax +46 31 23 24 90
Mikael.Jonsson@certex.net
Annika.carlstedt@certex.net
order@certex.se



FAROE MARITIME SER- VICES LTD.

Sundsvegur 11. 100 Torshavn
FAROE ISLANDS
Tel. +298 610000
Fax +298 610001
fms@fms.fo



SHIPS SAFE MARINE EQ / SAFETY GEAR

20-22 Zosimadon Str.
Piraeus 185 31, **GREECE**
Tel. +30 210 422 2845
Fax +30 210 422 2844
info@shipsafemarine.com



LLS ARMADA

Nab. r. Smolenka
Building 19-21 liter «B»
199048 SAINT PETERSBURG
RUSSIAN FEDERATION
Tel. +7 (812) 309 11 46
Fax +7 (812) 968 01 75
armadaspb1@mail.ru
info@armadaspb.ru



ATP-TRADING OY

Vartiokyläntie 9
FIN-00950 HELSINKI **FINLAND**
tel: +358 9 3250 055
petri.kuusisto@atp-trading.fi



YEKE DENIZCILIK AS

Evliya Celebi Mah. Rauf Orbay
Cad.
Ak Is Merkezi NO:33,
34940 Tuzla Istanbul **TURKEY**
Tel. +90 216 446 1938
Fax +90 216 446 1939
info@yekedenizcilik.com.tr

Asia



JEWON CORPORATION

485-5, Gupyung-Dong,
Saha-Ku,
Busan, **SOUTH KOREA**
Tel. +82 51 261 7638
Fax +82 51 261 7628
inbox@jewonkor.com



PORTEK SYSTEMS & EQUIPMENT PTE LTD

237 Pandan Loop,
#02-01, Westech Building,
128424 - **SINGAPORE**
Tel. (65) – 6873 1114
enquiry@portek.com



America



GREENFIELD PRODUCTS

3111 W. 167th Street
Hazel Crest, IL 60429 - **USA**
Tel: 708-331-3115
sales@greenfieldpi.com



WEST PACIFIC MARINE & INDUSTRIAL, INC

50 Ave. 69th St. Plaza Guadalupe
Building 4th floor, Suite 404,
Ciudad de Panamá - **PANAMÁ**
Tel. +00 5 0 73 02 27 50
jmantovani@westmar.com.pa



JUAN CARLOS ISAIA

Viamonte, 448 - 9° piso
1053 Buenos Aires - **ARGENTINA**
Tel. +54 11 4 311 35 18 /
+54 11 4 311 18 85
Fax +54 11 43 11 35 65
jcisaia@arnet.com.ar

Australia



TEC CONTAINER ASIA PACIFIC PTY LTD

**Australia, New Zealand, The Philippines
and the Pacific Region**

ABN 99 146 140 383
Unit 2 26 Argyle St
Albion QLD 4010 - **AUSTRALIA**
Phone: +61 1300 884 145
Mobile: +61 4 0868 3898
Mobile: +61 4 0781 8887
rcannon@teccontainer.com.au
www.teccontainer.com.au



1

1. Container lashing equipment

1.1. FIXED EQUIPMENT

1.1.1. FITTINGS ON DECK

Raised Sockets	1
Breech Base Sockets	1
Dovetail foundations	1
Lashing Plates	2
Turn-Foot D-Rings	2
D-Rings	2

1.1.2. FITTINGS IN HOLD

Flush Sockets	3
---------------	---

1.1.3. WELDABLE CONES + LASHING POTS

Weldable Cones	4
Lashing Pots	4

1.2. LOOSE EQUIPMENT

1.2.1. BASE STACKING

Single + Turnfoot	5
Circular + Breech Base	5
Dovetail Twistlocks	6

1.2.2. INTERMEDIATE STACKING

Intermediate Stackers	6
Manual Twistlocks	7
Turnfoot Twistlocks	7
Midlock / SATL	8

1.2.3. SELF-HANGING STACKERS+BRIDGE FITTING

Self - Hanging Stackers	9
Bridge Fittings	9

1.2.4. LASHING BARS + TURNBUCKLES

Eye / Swivel Head	10
Multistep / Swivel Head	10

2

2. RORO Lashing Equipment

2.1. FIXED EQUIPMENT

2.1.1. FOUNDATIONS

Cross Bar	11
Elephant Foot	11
Flush Circular	12
Flush Rectangular	12

2.1.2. LASHING EYES 13

2.2. LOOSE EQUIPMENT

2.2.1. SETS FOR CAR / TRUCK LASHING

Lashing Belts	14
Components	14
Lashing Chain Sets	15
Turnbuckles for Chains	15
Tension Levers	16

2.2.2. CAR/TRUCK CHOCKS + TRAILER HORSES

Car / Truck Chocks	17
Trailer Horses	17

3

3. Miscellaneous

3.1. ISO CORNERS 18

3.2. TWISTLOCKS FOR TRAILERS 18

3.3. LIFTING LUGS 18

1.1. Fixed Equipment



1.1.1. FITTINGS ON DECK

Raised Sockets

FE-72-1



Dovetail foundations

FE-03-1



Breach Base

FE-40-1



FE-28-1



Double and quadruple version available

MATERIAL: HIGH TENSILE STEEL / CAST STEEL
FINISH: NATURAL COLOR / PAINTED

Model	Weight kg	Dimensions mm	Minimum Breaking Load kN
FE-72-1	8,00	160 * 160 * 110	500
FE-40-1	2,00	178 * 65 * 23	400
FE-03-1	4,90	238 * 178 * 32	360
FE-28-1	4,90	238 * 178 * 40	360



1.1.1. FITTINGS ON DECK

Lashing Plates

FA-25-1



Turn-foot D-ring

FA-23-1



D-Rings

FA-01-1 (36)



FA-01-1C (36)



FA-01-1 (50)



FA-13-1C



FA-13-1C(50)



FA-13-2C



MATERIAL: HIGH TENSILE STEEL / DROP FORGED + STEEL PLATE FOUNDATION
FINISH: NATURAL COLOR / PAINTED

Model	Weight kg	Dimensions mm	Minimum Breaking Load kN
FA-25-1	1,80	160 * 112 * 25	500
FA-01-1 (36)	2,90	203 * 123 * 23	360
FA-01-1C (36)	3,00	188 * 150 * 24	360
FA-01-1 (50)	4,50	234 * 200 * 26	500
FA-13-1C	7,20	Diam 225 * 55	360
FA-13-1C (50)	8,50	Diam 273 * 62	500
FA-13-2C	13,20	Diam 345 * 54	360
FA-23-1	6,00	152 * 127 * 110	360

1.1. Fixed Equipment



1.1.2. FITTINGS IN HOLD

Flush Sockets

FE-07A-1



Flush Sockets

FE-38B-1



FE-38E-1

Double and quadruple version available



FE-17-1 A



MATERIAL: WELDABLE STEEL
FINISH: PAINTED

Model	Weight kg	Dimensions mm	Minimum Breaking Load kN
FE-07A-1	6,00	Diam 185 * 78	500
FE-38B-1	9,00	Diam 225 * 78	300
FE-38E-1	24,00	355 * 285 * 108	300
FE-17-1 A	7,00	Diam 185 * 120	500



1.1.3. WELDABLE CONES + LASHING POTS

Weldable Cones

Lashing Pots

CB-13-1

FA-03-1C



CB-13-1-A

FA-03-1U



CI-1-1K



MATERIAL: CAST STEEL / WELDABLE CAST STEEL
FINISH: NATURAL COLOR / PAINTED

Model	Weight kg	Dimensions mm	Minimum Breaking Load kN
CB-13-1	3,50	150 * 160 * 10	420
CB-13-1-A	1,60	Diam 100 * 55	420
CI-1-1K	0,50	Diam 100 * 54	420
FA-03-1C	2,50	150 * 90 * 74	120
FA-03-1U	4,85	250 * 145 * 135	360

1.2. Loose Equipment



1.2.1. BASE STACKING

Single + Turnfoot

Circular + Breech Base

CB-05-1F

CB-21-1C



CB-12-1

CB-21-10C (D)



MATERIAL: DUCTILE IRON / **HOUSING:** DUCTILE IRON; **CONE:** DROP FORGED
FINISH: HOT DEEP GALVANIZED

Model	Weight kg	Dimensions mm	Minimum Breaking Load kN
CB-05-1F	2,50	To be used in ISO Holes	420
CB-12-1	4,00	To be used in ISO Holes	420
CB-21-1C	7,00	To be used with FE-41	300
CB-21-10C (D)	6,00	To be used with FE-40	300



1.2.1. BASE STACKING

Dovetail Twistlocks

CB-25-1G



CB-25-1L



CB-34-1L



1.2.2. INTERMEDIATE STACKING

Intermediate Stackers

CI-1-1F



CI-1-2 (25)



CI-1-2 (80)



CI-1-3 (76)



MATERIAL: HOUSING: DUCTILE IRON; CONE: DROP FORGED
FINISH: HOT DEEP GALVANIZED

Model	Weight kg	Dimensions mm	Minimum Breaking Load Tn
CB-25-1G	7,00	175 * 140 * 128	420 Tn
CB-25-1L	7,00	176 * 140 * 129	420 Tn
CB-34-1L	7,50	176 * 160 * 136	420 Tn
CI-1-1F	3,00	130 * 125	420 Tn
CI-1-2(25)	6,50	325 * 150	640 Tn
CI-1-2(80)	7,00	380 * 150	640 Tn
CI-1-3(76)	8,00	440 * 150	200 Tn

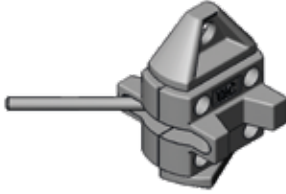
1.2. Loose Equipment



1.2.2. INTERMEDIATE STACKING

Manual Twistlocks

CI-5-1D



CI-5-1L



Turnfoot Twistlocks

CI-21-1 (D)



CI-21-1 (L)



MATERIAL: HOUSING: DUCTILE IRON; CONE: DROP FORGED
FINISH: HOT DEEP GALVANIZED

Model	Weight kg	Dimensions mm	Minimum Breaking Load kN
CI-5-1D	5,00	120 * 100 * 172	500
CI-5-1L	5,00	120 * 100 * 172	500
CI-21-1D	6,00	145 * 113 * 169	300
CI-21-1L	6,00	145 * 113 * 169	300



1.2.2. INTERMEDIATE STACKING

Midlock / SATL

CI-15 A-1

CI-45-P



CI-45-1



CI-45-1G



MATERIAL: HOUSING: DUCTILE IRON; CONE: DROP FORGED
FINISH: HOT DEEP GALVANIZED
MIN BREAK LOAD: 50Tn

Model	Weight kg	Dimensions mm	Distance Between Containers
CI-15A-1	6,00	178 * 120 * 190	500
CI-45-1	7,00	163 * 120 * 224	500
CI-45-1G	7,00	163 * 120 * 224	500
CI-45P	N/A	Upon request Aluminium	-----



1.2. Loose Equipment

1.2.3. SELF-HANGING STACKERS+BRIDGE FITTING

Self - Hanging Stackers

Bridge Fittings

CI-50-1

PC-1



CI-52



MATERIAL: HOUSING: DUCTILE IRON; CONE: DROP FORGED / HIGH TENSILE STEEL
FINISH: HOT DEEP GALVANIZED

Model	Weight kg	Dimensions mm	Minimum Breaking Load kN
CI-50-1	4,00	150 * 118 * 116	420
CI-52	3,00	105 * 112 * 85	420
PC-1	3,00	25 / 80	80



1.2.4. LASHING BARS

Eye / Swivel Head

BR-32 B



TE-26-2



TE-1-50-2



BR-04



Multistep / Swivel Head

BR-31C



TE-31-50-2



MATERIAL: HIGH TENSILE STEEL
FINISH: HOT DEEP GALVANIZED
MIN BREAK LOAD: 50Tn

Model	Weight kg	Dimensions mm	Minimum Breaking Load kN
BR-32B	N/A	Length upon Request	500
TE-26-2	14,00	Min 900 / Max 1400	500
TE-1-50-2	15,00	Min 950 / Max 1350	500
BR-04	N/A	Length upon Request	500
BR-31C	N/A	Length upon Request	500
TE-31-50-2	16,00	Length upon Request	500



2.1. Fixed Equipment

2.1.1. FOUNDATIONS

Cross Bar

FA-67H



FA-67G



Elephant Foot

FA-06-1



FA-06-01B



FA-06-01 (58)



FA-66A



MATERIAL: WELDABLE STEEL
FINISH: PAINTED / HOT DIP GALVANIZED

Model	Weight kg	Dimensions mm	Minimum Breaking Load kN
FA-67H (cast steel)	4,00	Diam 158 * 57	180
FA-67G (welded)	4,00	Diam 153 * 57	100
FA-06-1	4,00	Diam 250 * 56	200
FA-06-01B	2,00	Diam 230 * 58	200
FA-06-1B (58)	2,20	Diam 230 * 58	200
FA-66A	0,50	Diam 70 * 30	400



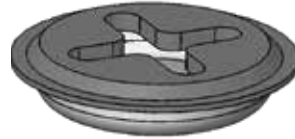
2.1.1. FOUNDATIONS

Flush Circular

FA-08-1J



FA-08-1K



Flush Rectangular

FE-38-1E



FA-08C-1



MATERIAL: WELDABLE HIGH TENSILE STEEL /
DROP FORGED + STEEL PLATE FOUNDATION

FINISH: PAINTED / HOT DIP GALVANIZED / NATURAL COLOR / PAINTED

Model	Weight kg	Dimensions mm	Minimum Breaking Load kN
FA-08-1J	8,5	Diam 225 * 58	200
FA-08-1K	8,5	Diam 225-270 * 58	250
FE-38-1E	24,00	355 * 285 * 108	300
FA-08C-1	8,1	210 * 210 * 58	250



2.1. Fixed Equipment

2.1.2. LASHING EYES

FA-01-1 (36)



FE-50-1



FA-01-1C (36)



FA-57-1



FA-01-1 (50)



FA-57-2A



MATERIAL: DROP FORGED + STEEL PLATE FOUNDATION
FINISH: NATURAL COLOR / PAINTED

Model	Weight kg	Dimensions mm	Minimum Breaking Load kN
FA-01-1(36)	2,9	188 * 150 * 24	360
FA-01-1C(36)	3,0	188 * 150 * 2	360
FA-01-1(50)	4,5	234 * 200 * 26	500
FA-50-1	1,00	127 * 120 * 60	200
FA-57-1	0,50	100 * 75 * 12	40
FA-57-2A	1,00	100 * 75 * 12	40



2.2. Loose Equipment

2.2.1. SETS FOR CAR / TRUCK LASHING

Lashing Belts

TE-6F



TE-6M (50)



TE-6M (75)



Components

GE-2



GE-2B



GE-14



MATERIAL: POLYPROPYLENE / HIGH TENSILE STEEL
FINISH: PAINTED

Model	Weight kg	Dimensions mm	Minimum Breaking Load kN
TE-6F	0,50	1800 * 25	16
TE-6M (50)	2,70	9000 * 50	50
TE-6M (75)	6,00	3500 * 75	100
GE-2	0,50	Diam 60	200
GE-2B	0,50	Diam 60	200
GE-14	0,50	173 * 18	200



2.2. Loose Equipment

2.2.1. SETS FOR CAR / TRUCK LASHING

Lashing Chain Sets

CD-30 (20T)



CD-40 (20T)



CD-130



Turnbuckles for Chains

TE-14-0



TE-14-1



TE-45-20.0



TE-45-20.1



MATERIAL: HIGH TENSILE STEEL GRADE 80 / HIGH TENSILE STEEL
FINISH: PAINTED / HOT DIP GALVANIZED

Model	Weight kg	Dimensions mm	Minimum Breaking Load kN
CD-30	N/A	Diam 13, Length upon Request	200
CD-40	N/A	Diam 13, Length upon Request	200
CD-130	N/A	Diam 13, Length upon Request	200
TE-14-0	6,20	Min 470 / Max 620	200
TE-14-1	6,20	Min 510 / Max 600	200
TE-45-20.0	8,50	Stroke 250	200
TE-45-20.1	8,50	Stroke 250	200



2.2.1. SETS FOR CAR / TRUCK LASHING

Turnbuckles for Chains

TE-4-20.0

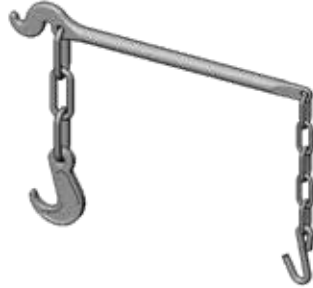


TE-4-20.1

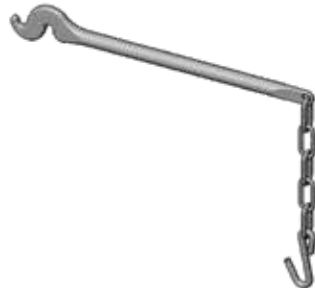


Tension Levers

TE-3.20.0



TE-3.20.1



MATERIAL: HIGH TENSILE STEEL
FINISH: HOT DIP GALVANIZED

Model	Weight kg	Dimensions mm	Minimum Breaking Load kN
TE-4-20-0	7,00	Min 570 / Max 770	200
TE-4-20-1	7,00	Min 570 / Max 770	200
TE-3-20-0	5,00	518	200
TE-3-20-1	5,00	600	200

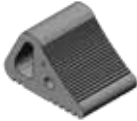


2.2. Loose Equipment

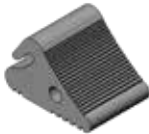
2.2.2. TRAILERS HORSES / RUBBER CHOCKS

Car / Truck Chocks

CL-9



CL-10



CW-1



CW-2

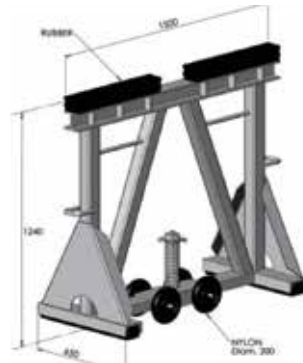


Trailer Horses

CT-4D



CT-23



MATERIAL: RESISTANT OIL RUBBER ANTI SKID / STRUCTURAL STEEL
FINISH: PAINTED

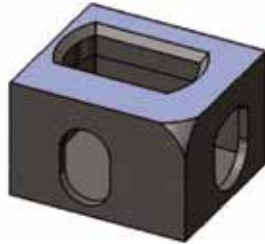
Model	Weight kg	Dimensions mm	Min Breaking Load Tn
CL-9	1,50	155 * 120 * 93	----
CL-10	4,50	270 * 140 * 153	----
CW-1	1,50	170 * 94 * 99	----
CW-2	4,50	242 * 179 * 167	----
CT-4D	120,00	1420 * 1250 * 650	80
CT-23	130,00	1500 * 1240 * 650	120



3. Miscellaneous

3.1. ISO CORNERS

CR-05



3.2. TWISITLOCKS FOR TRAILERS

TL-10



TL-14



TL-16



3.3 LIFTING LUGS

GE-11



GE-34C-1



MATERIAL: CONE: DROP FORGED / HOUSING: DUCTILE IRON; CONE: DROP FORGED
FINISH: PAINTED / CONE GALVANIZED, HOUSING PAINTED
MIN BREAK LOAD: In accordance with ISO 1161 / 8T

Model	Weight kg	Dimensions mm
CR-05	11,00	In accordance with ISO 1161
TL-10	4,00	330 * 145
TL-14	6,00	180 * 130
TL-16	4,00	183 * 170
GE-11	7,00	270 * 100
GE-34C-1	6,00	110 * 75



TEC[®]
CONTAINER

TEC CONTAINER S.A.



C/Tajo, 19. Pol.Ind. "Las Acacias"
28840 • Mejorada del Campo
Madrid • Spain

Phone: +34 913 021 638

teccontainer@teccontainer.com

www.teccontainer.com